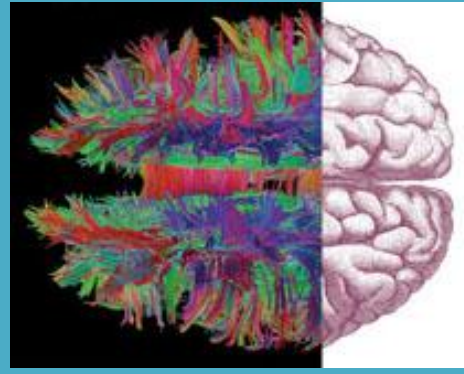




Desprez/Chaoscope *Poisson Attractor*



From cover Sporns' *Networks of the Brain*

20TH ANNIVERSARY 2012 WINTER CHAOS CONFERENCE

SPONSORED BY THE BLUEBERRY BRAIN INSTITUTE

@ VERMONT COLLEGE OF FINE ARTS
MONTPELIER, VT, USA
MARCH 23-25, 2012

Systems Thinking in Science, Education, the Humanities, and Society

This conference has established a tradition of informality in both style and substance that features open discussion and mutually respectful interactions among participants. It is open to metaphoric as well as formal explorations of systems/integrative thinking into science (including psychological, social, biological, mathematical, and logical disciplines), education, the humanities, society, and philosophy.

Click or Scroll to:

Venue & Lodging	Participants to date	Schedule (tentative)
Travel Board	Parking Pass	Previous Conferences

Contact: frederick.d.abraham@gmail.com

[Poster: Print & Post](#)

VENUE & LODGING

Please note our venue is in Montpelier, not Burlington. Ted Hoppe has done some considerable exploration of venue options while I was away teaching in the Philippines, and upon my return we settled on a small college campus on the hill above the capitol city of Vermont. Very pleasant campus and very congenial and reasonable. They have a dorm on the 2nd floor of the building plus a lounge for chatting and snacking, and meeting rooms on the main floor. The rates are \$50 per night, double or single occupancy (meaning \$25/person for double occupancy). The rooms have twin beds. They are very pleasant and aesthetic, but no tv or bathrooms, instead there are communal bathrooms. Except for two rooms for couples that cost \$75 per night which have bathrooms and kitchens. There is a small common room with fridge and microwave and washer and dryer. There is a large lounge room also on the same floor. It has a TV and comfortable chairs and couches, as do two conference rooms on the ground floor. News and entertainment you will have to stream with your smart phones or laptops when in your rooms. We urge you to use these rooms the convenience of being on site with the conference room. For those who would prefer to use a traditional motel, there is an EconoLodge (802 229-5258) about 2 miles away @ \$54 per night. For those who wish more upscale lodging, there are two good hotels within a mile. The Capitol Plaza across from the state house (802 229-9039) and the Inn at Montpelier (802 223-2727). Another plus for lodging at the campus is that its cafeteria is run by the New England Culinary Institute, which is in Dewey Hall, just across the campus green from Noble Hall where our venue is. The NECI is one of the nation's finest culinary schools. The campus is a half mile from downtown; a short walk. There are several eating establishments downtown including those run by NECI.

Noble Dorm: http://www.vermontcollege.edu/webfm_send/667

Noble Lounge: http://www.vermontcollege.edu/webfm_send/664

Catering and Cafeteria; <http://www.vermontcollege.edu/conference-services/facilities/food-service>

General information about Conferences Services: <http://www.vermontcollege.edu/conference-services>

Contact Fred for dorm room reservations; other lodging you arrange on your own.

TRAVEL: BUS, TRAIN, CAR TO MONTPELIER; AIR TO BTV (BURLINGTON)

There is local bus service that stops right at the airport, and this local bus connects with the "Link Express," a Burlington to Montpelier commuter coach. The Link Express has one mid-day trip, and a number of trips early morning and early evening. The cost is about \$5.00. Note that it involves a change of bus in Burlington, so we try to have you share rental cars for the commute to/from the airport, see [travel board](#) infra. For backup, I provide a link here to the bus schedule.

<http://www.gmtaride.org/PDF/capital/montpelierlink.pdf> Conference registration begins at 2PM Thursday at Nobel Hall on campus, snacks and evening Pizza Party in the lounge. Use Parking link above for map and parking permit. [Ted]

[\[return to click launch\]](#)

CONFERENCE MODUS OPERANDI

This is a small 2 ½ day conference of about 20 people of diverse interests and with a strong interdisciplinary bent and a common view of integrative science education, arts, and culture. Uses of dynamics and complexity vary from technical, through metaphoric, to none! We frequently cross-reference each other's work. Conference etiquette pretty much suggests attendance for the whole conference and to all sessions. With the time and the usual number of participants, the presentations usually are from 45-min to an hour, a few want less time, and a few find ways to use that time. We are very casual about things in general and have no formal submitting requirements. Try getting at least a title in to me asap for listing on this page. As abstracts with pictures (approximately 300 pixels each dimension) come in, I will post them on Implexi Mundi.

[IMPLEXI MUNDI](#)

is web site we use for abstracts, short articles, comments, and links to occasional articles.
The table of participants has links to individual conference abstracts.

PARTICIPANTS

(partial and preliminary list; * indicates those who are not yet fully confirmed;
** virtual presentation (Skype); links—in blue— are mostly to abstracts at Implexi Mundi)

NAME	INSTITUTION	FIELD	TOPIC
Jean Alvarez	Lake Erie Brain	Social Psychology	Neurofeedback
Karen VanderVen	Pittsburgh	Education	NLD Ed Scandal
Ed Condict	New Hampshire	Biofeedback, pastor	kibitizing
Martin Gardiner	Brown	Education, Psych, Music	Functional Consciousness
Matthijs Koopmans	Mercy College	Education	Causality & Education
Jerry Chandler	[canceled]	Formal Chemistry	Mental States+
Derek Paar	[canceled]		Empathy in Novels
Ted Hoppe	Blueberry Brain	Psych, Networking	The Self
Carlos Torre	SCSU & Yale	Education	Ecology of Education
Linda Alford*			Fractal Epidemiology/ Taxonomy/Life Race Research
Sean Hill	Lewis & Clark CC	C&C in Psych	Race Research
Alan Bachers	Neurofeedback	Foundation	Class IV NDS Brain
Piñero <i>et al.</i> **	Silliman University	Psych/Complexity	Critical Psychology
Fred Abraham	Blueberry Brain	Brain Sciences	Neural Specificity
John Strong aka Sayko Jack	Strong Financials	Financial Advisor Philosophy	Evolutionary Psych CHIBOOM
Mark Filippi	Private practice	Somatics	Experiential Health
Bob Porter	C. MedPsych Syst.	Clin Psych; Philos.	Future of NLD in ψ
Roulette Smith	IPIS	Medical Advocacy	Epigenomics

George Muhs	Private practice	Chiropracty	Metaphoric Modeling
Ralph Abraham*	UC Santa Cruz	Dynamics	Akasha consciousness
Bob Eldridge	So. Conn. St. U.	Economics	kibbitz
Thanasis Argirou*	[canceled]	Physics, Philosophy	Consciousness Res.
Joel Gordon			Process Equation
Mauricio Lask	CSPP	Clinical Psychology	The Depressive Attractor
Steven Cushing*	[canceled]	Jung/Math	semiotics
Tina Champagne	OT Innovations	Occupational Therapy	kibbitzing
John Thompson		Psychology	Trauma & Abuse
Terry Marks-Tarlow**	Private practice	Clinical Psychology	Cracked Orlando abstract/comments
Weili Luo	U. Central Florida	Physics	Meaning of Being Human
Frank Mosca		Psychology	Complexity as Intelligence
Doris Fromberg	Hofstra University	Education	NLD, Meaning, Early Ed
Dorothy Frederick	OT Innovations	Occupational Therapy	kibbitzing
Joanne Payne	Ted's friend		kibbitzing
Mike McCullough	CUNY	Social Philosophy	Cmplxty Th & Politics
Cynthia Savage		Neurofeedback	Kibbitzer

[\[return to click launch\]](#)

TENTATIVE SCHEDULE

Friday	3.23.12	Saturday	3.24.12	Sunday	3.25.12
7:30	Breakfast	7:30	Breakfast*	7:30	Breakfast
8:30	Welcome	8:00	SU/Gus*	8:30	Welcome
8:45		8:45		8:45	Fred?
9:30		9:30		9:30	Ralph?
10:15	Snack Break	10:15	Snack Break	10:15	Snack Break
10:30		10:30		10:30	
11:15		11:15		11:15	Terry*
12:00	Lunch	12:00	Lunch	12:00	Lunch
1:00		1:00			Depart
1:45		1:45			Chat
2:30		2:30			Sightsee
3:15	Snack Break	3:15	Snack Break		etc.
3:30		3:30			
4:15		4:15			
5:00	Break	5:00	Break		
6:30	Dinner jazz	6:30	Dinner		Jazz reh

Update: 03.16.12 5 PM EST, by fda

Contact: frederick.d.abraham@gmail.com

* Virtual (Skype video) presentation

[Scroll down for travel board](#)

TRAVEL BOARD

Lists rides offered and needed and arrivals and departures so they can be coordinated

	Ride offers	where	Ride wanted	where	Bus arr	Bus dep	Train arr	Train dep	Air arr	Air dep
Alford*										
Alvarez			yes	Boston						
Argirou*										
Bachers	North	hampton	MA	bring	Thompson					
Champagne	Spring	field	MA	bring	Frederick					
Chandler										
Condict										
Cushing*										
Eldridge										
Filippi									4:35 PM	5:30 PM
Frederick	see	Champ	agne							
Fromberg								USAir	1:40 Fri	
Gardiner										
Gordon	yes									
Hill									1:46 PM	5:20 PM
Hoppe										
Koopmans										
Lask									9:00 PM	6:30 PM
Luo									8:54 PM	5:28 PM
McCullough									2:56 PM	12:50 N
Mosca								auto	Friday	
Muhs									4:35 PM	5:30 PM
Paar										
Payne										
Porter										
Savage									6:15 PM	
Smith*										
Strong									6:56 PM	1:33 PM
Thompson	self	see	Bacher	NYC						
Torre	yes	CT								
VanderVen									1:40 Fri	

[\[Return to click launch\]](#)

	Definitely coming	Maybe coming
Definitely presenting	21	
Maybe presenting	1	1
Kibitzers	6	
Virtual Presentations	2	